

DZC 901/902

DZC 901 and 902 are horizontal anchor windlasses with single or double gypsies. Electric or hydraulic versions are available providing a max. pull of 1100 kgs. It has a gypsy for chains 10, 12 or 13 mm DIN766, 11 or 12.5 mm stud-link.

	DZC 901E / 902E (DC)	DZC 901E / 902E (AC)	DZC 901H / 902H
Drive	DC Electric Motor (24V)	AC Electric Motor (210-400V, 3 ph)	Hydraulic Motor
Max. cont. Pull	730 kg (S2)	660 kg (30 min)	1000 kg (30 min)
Max. pull	1100 kg (S3)	1000 kg (2 min)	1100 kg (2 min)
Haulage speed (for 200 kg. working load)	15 m/min.	12 m/min.	13 m/min.
Gypsy for chain	10-12-13 mm DIN766, 11-12.5 Stud-link	10-12-13 mm DIN766, 11 Stud-link	10-12-13 mm DIN766, 11-12.5 Stud-link
Approximate weight	95 / 120 kg	95 / 120 kg	90 / 115 kg
Current draw (at max. cont.pull)/ Hyd. pressure - Oil flow (on motor)	110A	4.5A	110 bar - 25 lt/min
Motor power	2000W	2200W (400V - 50hz)	



DZC 901 E BL / P-12K/1**No. Of Gypsy & Drum**

901	1 gypsy 1 warping drum
902	2 gypsies 2 warping drums

Drive

E	E. Motor driven
H	Hydraulic motor driven

Gypsy & Drum Position

A	1 gypsy 1 drum (as the drawing)
AL	1 gypsy 1 drum (on opposite side)
B	1 gypsy 1 drum (as the drawing)
BL	1 gypsy 1 drum (on opposite side) 2 gypsies 1 drum

Material

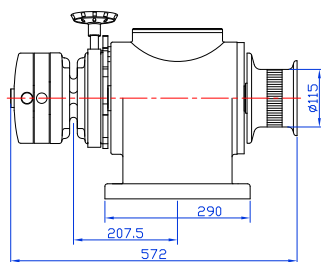
B	Bronze
Kr	Stainless steel
P	Steel

Chain Type / Size

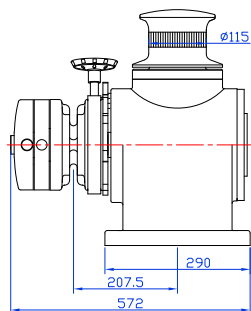
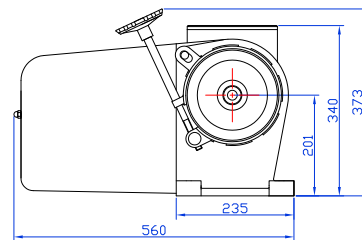
10K	10 mm DIN766
12K	12 mm DIN766
13K	13 mm DIN766
11L	11 mm Stud-link
12.5L	12.5 mm Stud-link

E. Motor

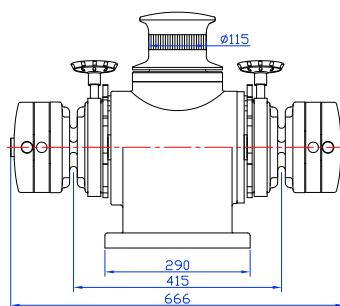
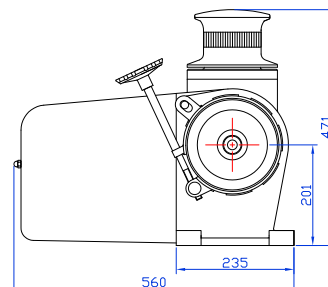
1	2000 W V DC E. Motor
2	2200 W 380V AC E. Motor



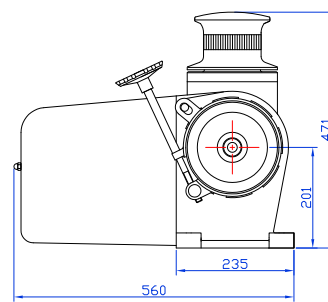
DZC 901H/E type A



DZC 901H/E type B



DZC 902H/E



FEATURES

Manual override.

Gypsies are equipped with both clutch and band brake to allow independent operation of gypsy and warping drum.

Chain can be dropped by means of loosable conical clutch which also provides overload protection.

Body is marine grade aluminium and covered with white (RAL 9016) polyurethane paint..

Drive shaft, brake screw and brake band are stainless steel.

Delivered with marine type DC relays for reversible operation (DC electric motor models).

OPTIONS

Hydraulic motor drive

Chrome plated bronze gypsy,clutch and warping drum.

Polyurethane painted steel gypsy, clutch and warping drum.

Mirror polished stainless steel gypsy, clutch and warping drum.

Single or double gypsy.

Warping drum on top or at side.

For single gypsy models, right and left versions available.